

# Evacuation Plan

Level 01 F07 Carslaw Building



## Evacuation Procedures

### ALARMS

**BEEP...BEEP...** Prepare to evacuate

1. Check for any sign of immediate danger
2. Shut down equipment & processes
3. Collect any nearby personal items

**WHOOP...WHOOP...** Evacuate the building

1. Follow the **EXIT** signs
2. Escort visitors & those who require assistance
3. Do not use lifts
4. Proceed to assembly area

### EMERGENCY RESPONSE

1. Warn anyone in immediate danger
2. Fight the fire or contain the emergency, if safe & trained to do so

If necessary...

3. Close the door, if safe to do so
4. Activate the 'Break Glass' Alarm



5. Evacuate via your closest safe **EXIT**

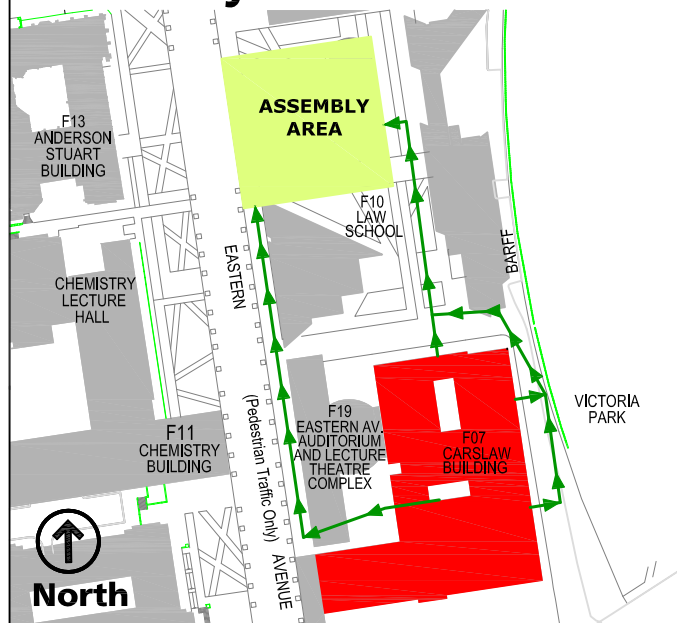


6. Report the emergency 0-000 & 1-3333



EXIT PATH shown as

## Assembly Area

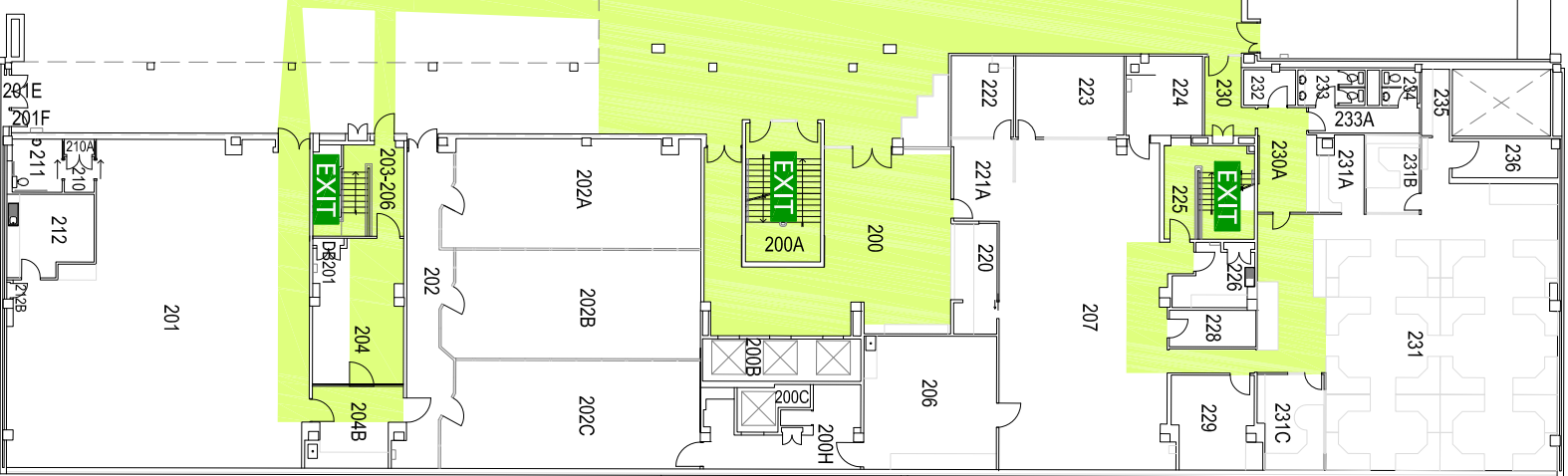


North

Level 02 F07 Carslaw Building

F07

# Carslaw Building



North 

## ALARMS



2. Shut down equipment & processes
3. Collect any nearby personal items



3. Do not use lifts
4. Proceed to assembly area

## EMERGENCY RESPONSE

- 2. Fight the fire or contain the emergency, if safe & trained to do so**

If necessary...

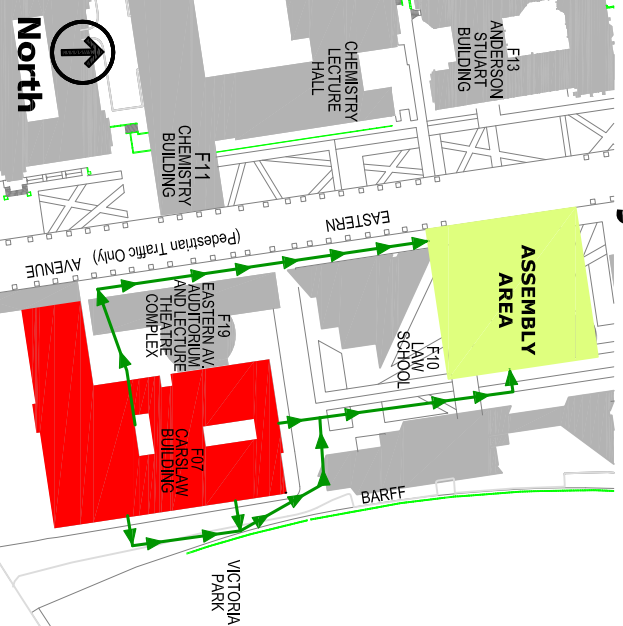
3. Close the door, if safe to do so
4. Activate the 'Break Glass' Alarm

- ## 5. Evacuación

- ## 6. Rep

EXIT PATH shown as 

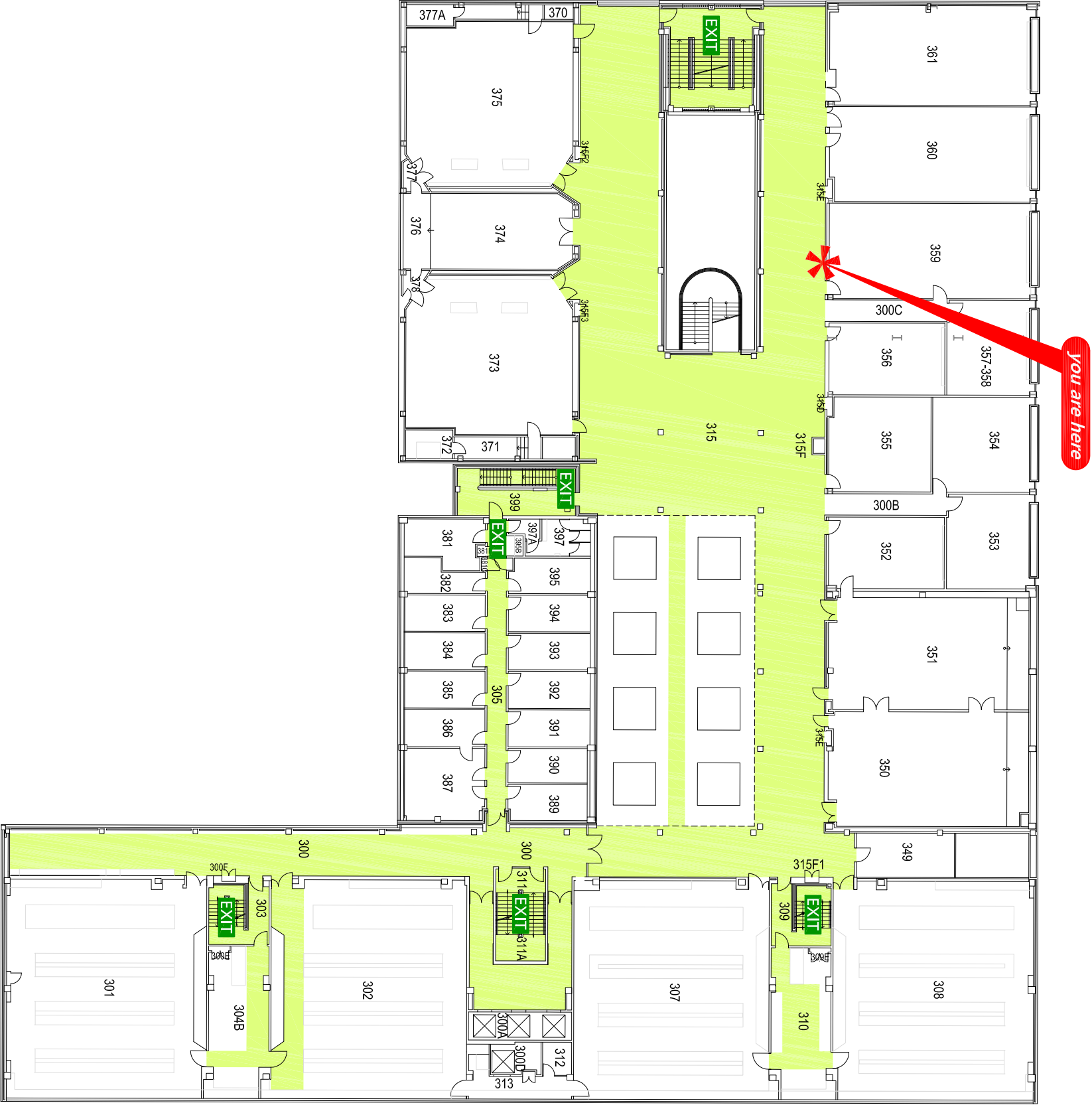
## Assembly Area



The University of Sydney - Campus Infrastructure Services - FR-F07-L02 - Apr. '08

# Evacuation Plan

Level 03    F07    Carslaw Building



## Evacuation Procedures

### ALARMS

- BEEP...BEEP...** Prepare to evacuate
- 1. Check for any sign of immediate danger
- 2. Shut down equipment & processes
- 3. Collect any nearby personal items

- WHOOP...WHOOP...** Evacuate the building
- 1. Follow the **EXIT** signs
- 2. Escort visitors & those who require assistance
- 3. Do not use lifts
- 4. Proceed to assembly area

### EMERGENCY RESPONSE

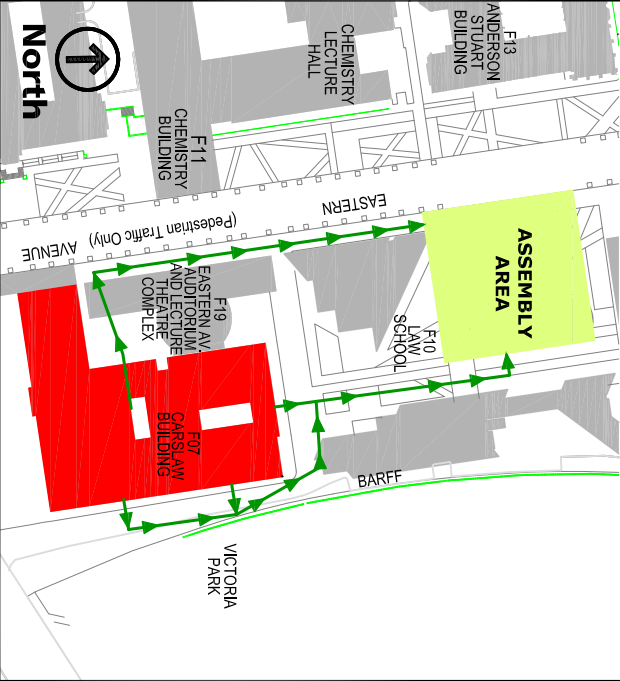
- 1. Warn anyone in immediate danger
- 2. Fight the fire or contain the emergency, if safe & trained to do so

If necessary...

- 3. Close the door, if safe to do so
- 4. Activate the 'Break Glass' Alarm
- 5. Evacuate via your closest safe **EXIT**
- 6. Report the emergency 0-000 & 1-3333

EXIT PATH shown as

## Assembly Area






# Evacuation Plan

Level 01    F11    Chemistry Building



## Evacuation Procedures

### ALARMS

-  **BEEP...BEEP...** Prepare to evacuate
- 1. Check for any sign of immediate danger
- 2. Shut down equipment & processes
- 3. Collect any nearby personal items

-  **WHOOO...WHOOO...** Evacuate the building

- 1. Follow the **EXIT** signs
- 2. Escort visitors & those who require assistance
- 3. Do not use lifts
- 4. Proceed to assembly area

### EMERGENCY RESPONSE

- 1. Warn anyone in immediate danger
- 2. Fight the fire or contain the emergency, if safe & trained to do so

If necessary...

- 3. Close the door, if safe to do so
- 4. Activate the 'Break Glass' Alarm



- 5. Evacuate via your closest safe **EXIT**

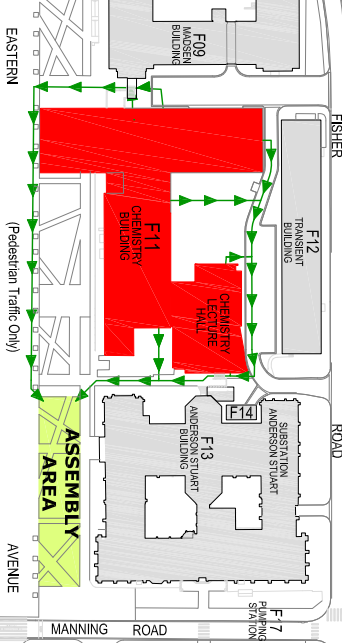


- 6. Report the emergency to 0-000 & 935 1-3333



EXIT PATH shown as 

## Assembly Area

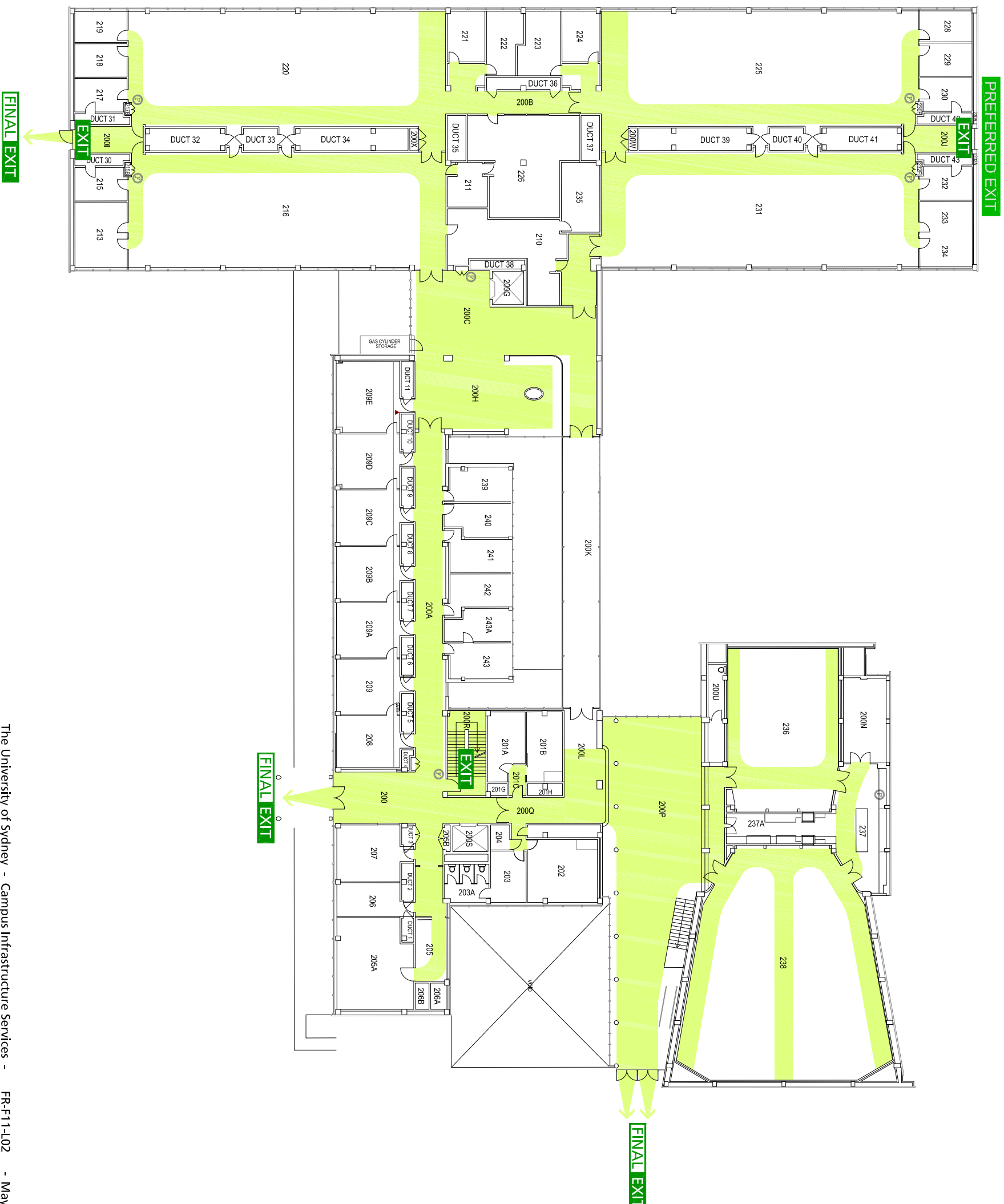


Level 02 F11 Chemistry Building

# Level 02



# Chemistry Building



## ALARMS

1. Check for any sign of immediate danger
2. Shut down equipment & processes
3. Collect any nearby personal items

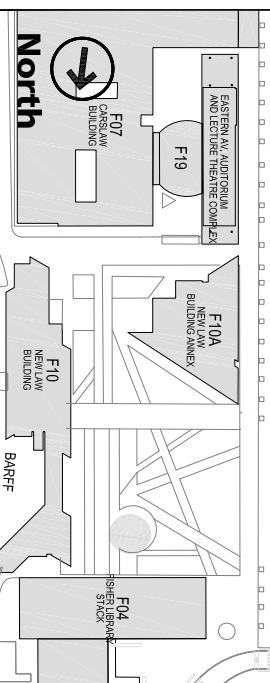
1. Follow the **EXIT** signs
2. Escort visitors & those who require assistance
3. Do not use lifts
4. Proceed to assembly area

- 1. Warn anyone in immediate danger**
- 2. Fight the fire or contain the emergency, if safe & trained to do so**

3. Close the door, if safe to do so
4. Activate the 'Break Glass' Alarm

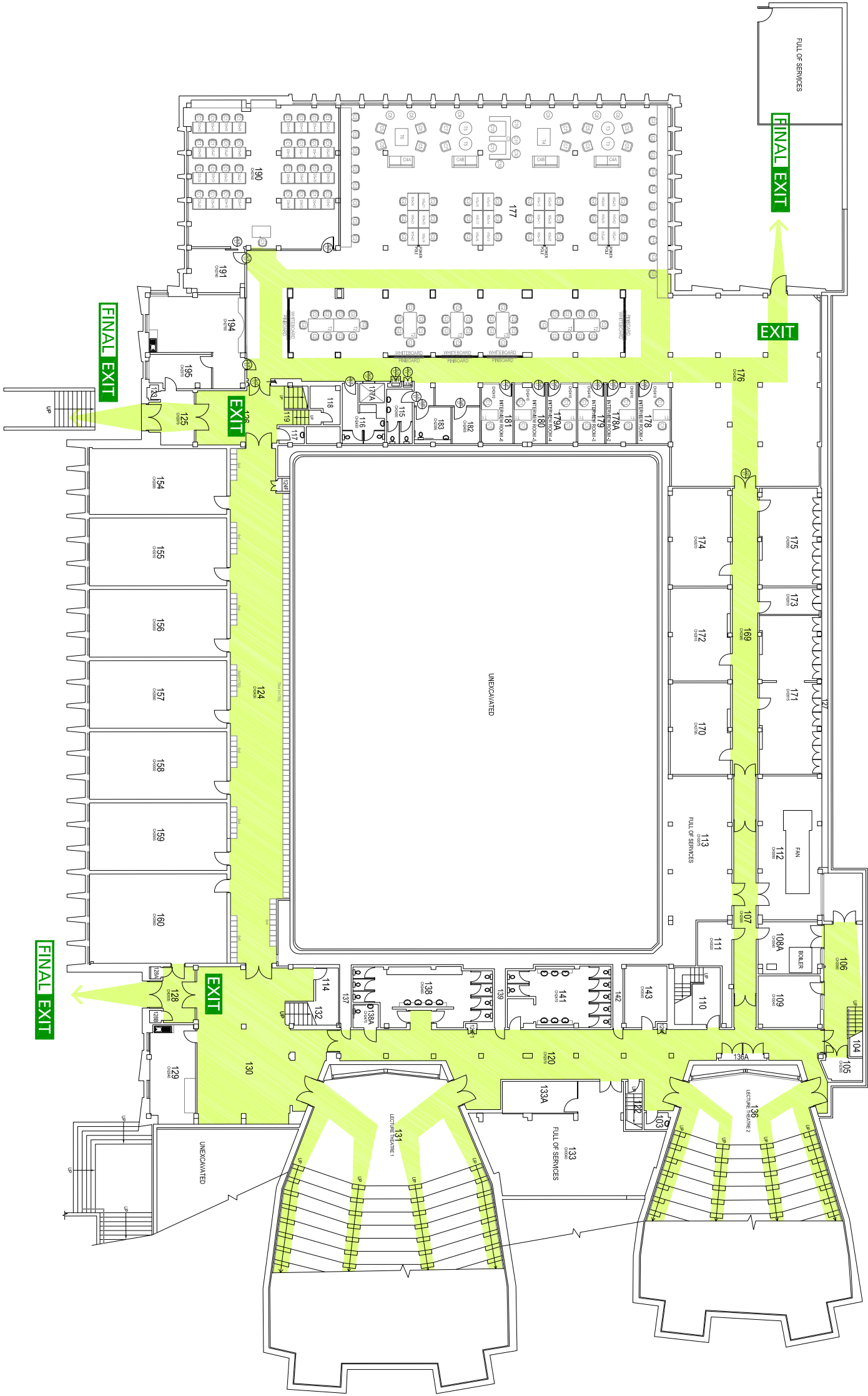
or

6. Report the emergency to 0-000 & 935 1-3333

[illegible]

# Evacuation Plan

Level 01    H04    Merewether Building



North

## Evacuation Procedures





### ALARMS


1. Check for any sign of immediate danger
2. Shut down equipment & processes
3. Follow the **EXIT** signs
4. Escort visitors & those who require assistance
5. Do not use lifts
6. Proceed to assembly area

### EMERGENCY RESPONSE

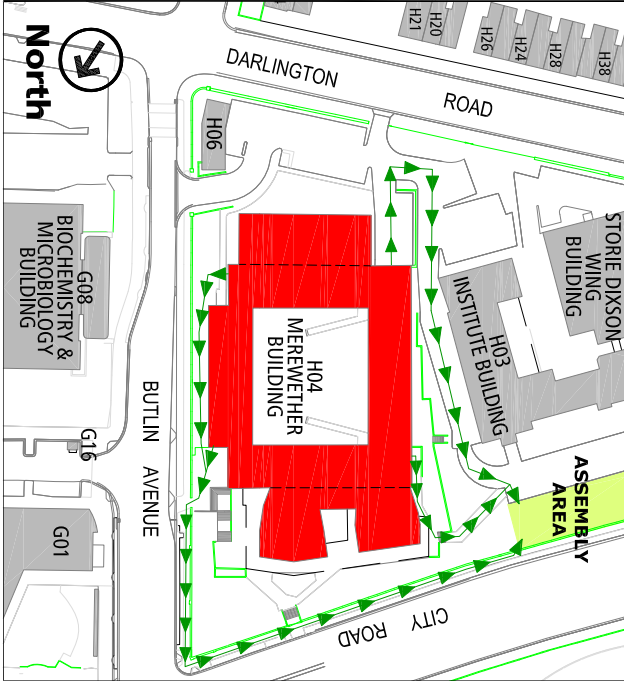
1. Warn anyone in immediate danger
2. Fight the fire or contain the emergency, if safe & trained to do so

If necessary...

3. Close the door, if safe to do so
4. Activate the 'Break Glass' Alarm  
 or 
5. Evacuate via your closest safe **EXIT**  

6. Report the emergency 0-000 & 1-3333  


EXIT PATH shown as 

## Assembly Area



North